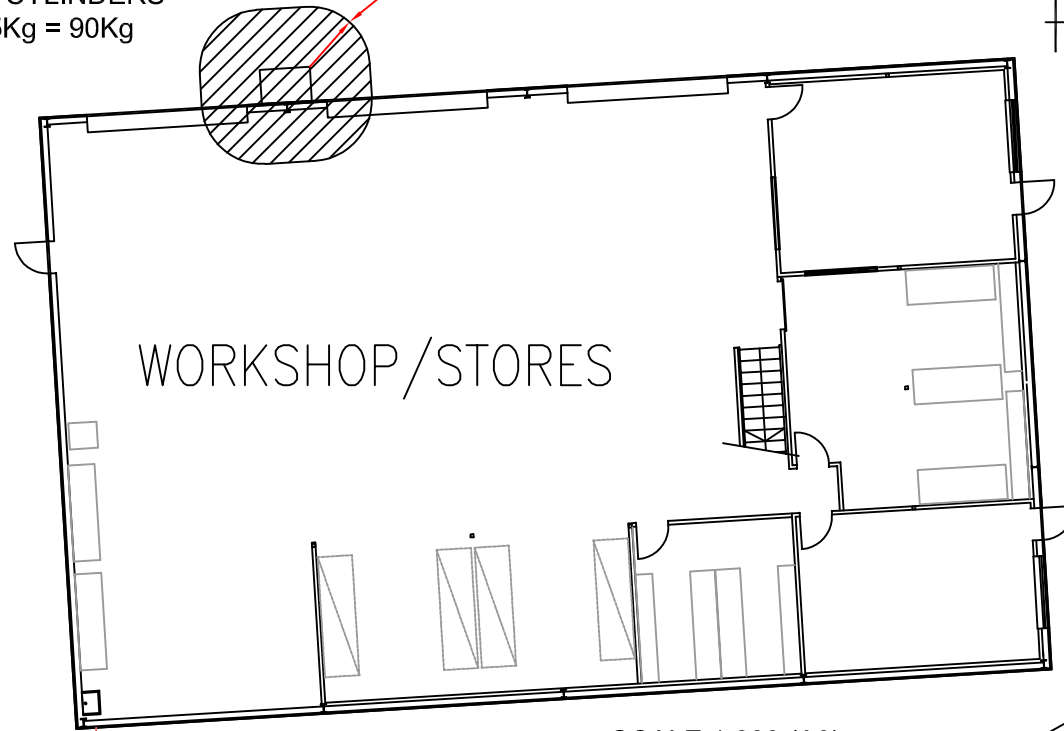


LOCATION No. 14  
LPG CYLINDERS  
6x15Kg = 90Kg

R1500  
NOTE 2

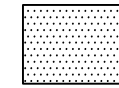
SITE NORTH



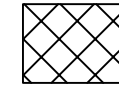
SCALE 1:200 (A3)

NOTES.

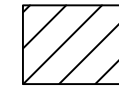
1) HAZARDOUS AREA CLASSIFICATION TO AS/NZS 60079.10.1:2009 TO BE READ TOGETHER WITH HAZARDOUS AREAS DATASHEET - SHT2



ZONE 0 FLAMMABLE ATMOSPHERE LIKELY TO BE PRESENT CONTINUOUSLY



ZONE 1 FLAMMABLE ATMOSPHERE LIKELY TO OCCUR IN NORMAL OPERATION

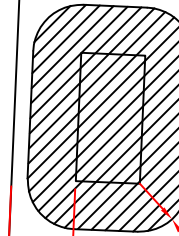


ZONE 2 FLAMMABLE ATMOSPHERE COULD OCCUR IN ABNORMAL CONDITIONS

2) ZONE 2 0.5m ABOVE CABINET DOWN TO GROUND LEVEL.

SITE NORTH

STORES



LOCATION No. 15  
LPG CYLINDERS  
32x15Kg = 480Kg

R1500  
NOTE 2

DRY

2000  
SEP  
DIST

SCALE 1:250 (A3)

STORES

**HAZCOM**

Hazcom Limited  
2 Murray Road ☎ +64 (0)21 246 3240  
Te Atatu Peninsula gfarrelly@hazcom.co.nz  
Auckland 0310, NZ hazcom.co.nz

TITLE

LPG CYLINDERS  
HAZARDOUS AREA CLASSIFICATION

ALL DIMENSIONS  
IN MILLIMETRES  
UNLESS NOTED  
OTHERWISE



DRG NO.

HS22

REV

0

SHT 1 OF 2

THIS DOCUMENT SHALL NOT BE REPRODUCED, COPIED, LOANED DIRECTLY OR INDIRECTLY NOR USED FOR ANY PURPOSE OTHER THAN THAT FOR WHICH IT IS SPECIFICALLY FURNISHED WITHOUT PRIOR WRITTEN CONSENT OF HAZCOM LTD.

REV	DATE	DESCRIPTION	DRAWN	CHECKED	APPROVED
△					
△					
△	01-11-18	FOR APPROVAL	GJF		

Rev	Plant Area or Equipment Item			Flammable Material							Process Conditions		Ventilation Ref.	Source of Release		Hazardous Area Distances						Code Ref. AS/NZS 60079.10.1 2009	Comments	
	No.	Name	Loc.	Name	Volume L	B. Pt. (°C)	Fl.Pt. (°C)	Auto Iq.n Temp. (°C)	LEL (% by Vol.)	Vap. SG (Air = 1)	Elec. Equip. Class.n to AS 2380.1	Temp. (°C)		Press. (kPa.g)	Description	Grade	Zone 0		Zone 1		Zone 2			
																	Horiz.	Vert.	Horiz.	Vert.	Horiz.			Vert.
	14	Workshops LPG Cylinders Cage (Forklift Fuel) 6 x 15kg cyl.		Propane (LPG)	90 kg	-42	gas	450	1.7	1.56	T2 IIA	Amb.	1,000	Adequate Open sided cage	Cylinder valve or seals	Secondary	---	---	1.5m	0.5m above cyl. down to GL	ZA.6.5.2.16			
	15	Dry Stores LPG Cylinders Cage (Forklift Fuel) 32 x 15kg cyl.		Propane (LPG)	480 kg	-42	gas	450	1.7	1.56	T2 IIA	Amb.	1,000	Adequate Open sided cage	Cylinder valve or seals	Secondary	---	---	1.5m	0.5m above cyl. down to GL	ZA.6.5.2.16			

△					
△					
△					
△	30-10-18	FOR APPROVAL	GJF		
REV	DATE	DESCRIPTION	DRAWN	CHECKED	APPROVED

**HAZCOM**  
 Hazcom Limited  
 2 Murray Road  
 Te Atatu Peninsula  
 Auckland 0310, NZ  
 ☎ +64 (0)21 246 3240  
 gfarrelly@hazcom.co.nz  
 hazcom.co.nz

THIS DOCUMENT SHALL NOT BE REPRODUCED, COPIED, LOANED DIRECTLY OR INDIRECTLY NOR USED FOR ANY PURPOSE OTHER THAN THAT FOR WHICH IT IS SPECIFICALLY FURNISHED WITHOUT PRIOR WRITTEN CONSENT OF HAZCOM LTD.

TITLE  
 AREA 14 & 15 - LPG CYLINDERS  
 HAZARDOUS AREA CLASSIFICATION

ALL DIMENSIONS  
 IN MILLIMETRES  
 UNLESS NOTED  
 OTHERWISE  
 DRG NO. HS22  
 SHT 2 OF 2  
 REV 0